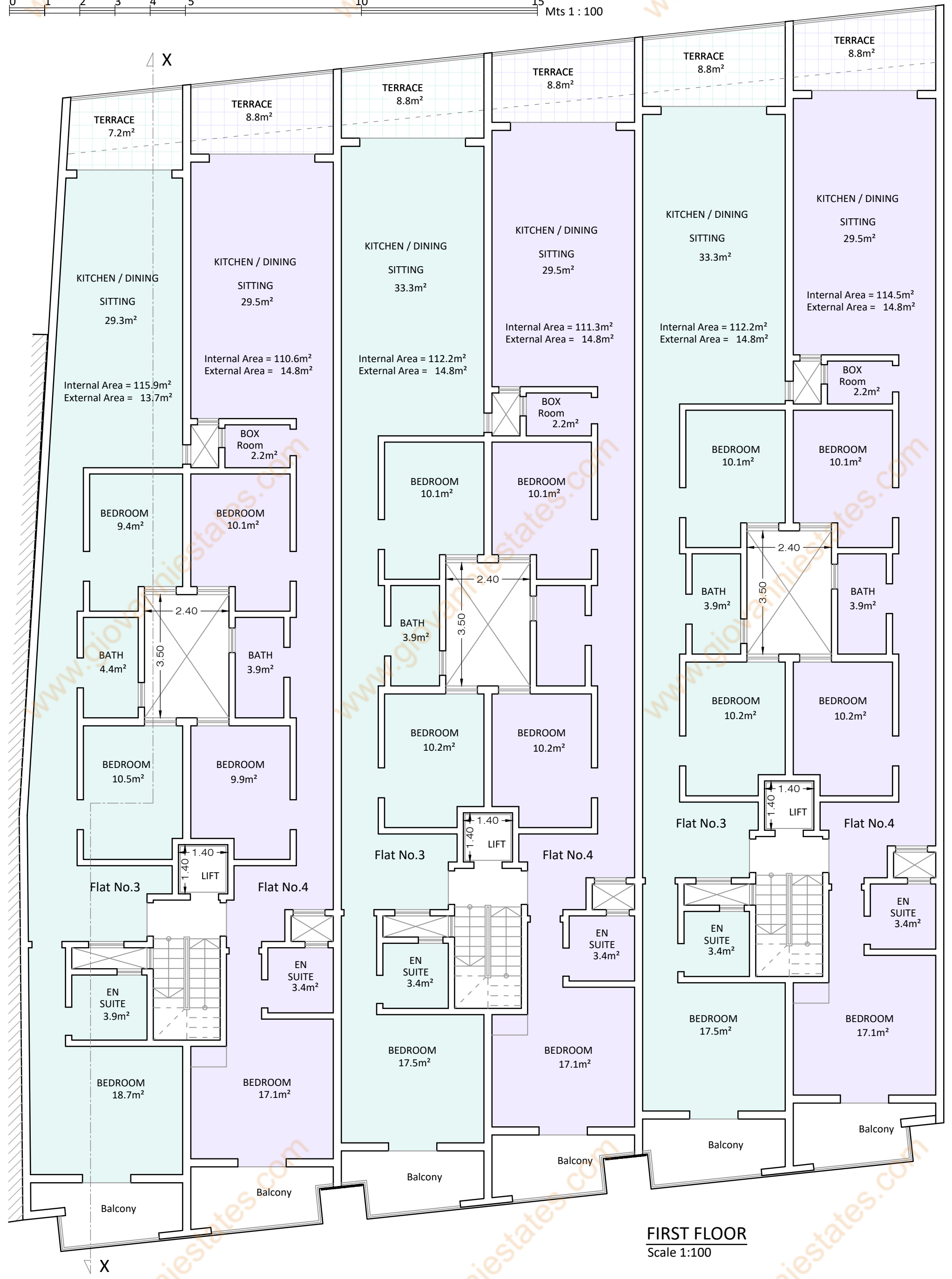
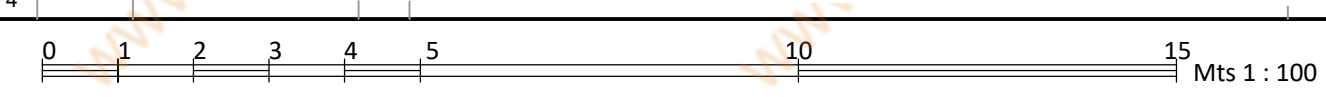
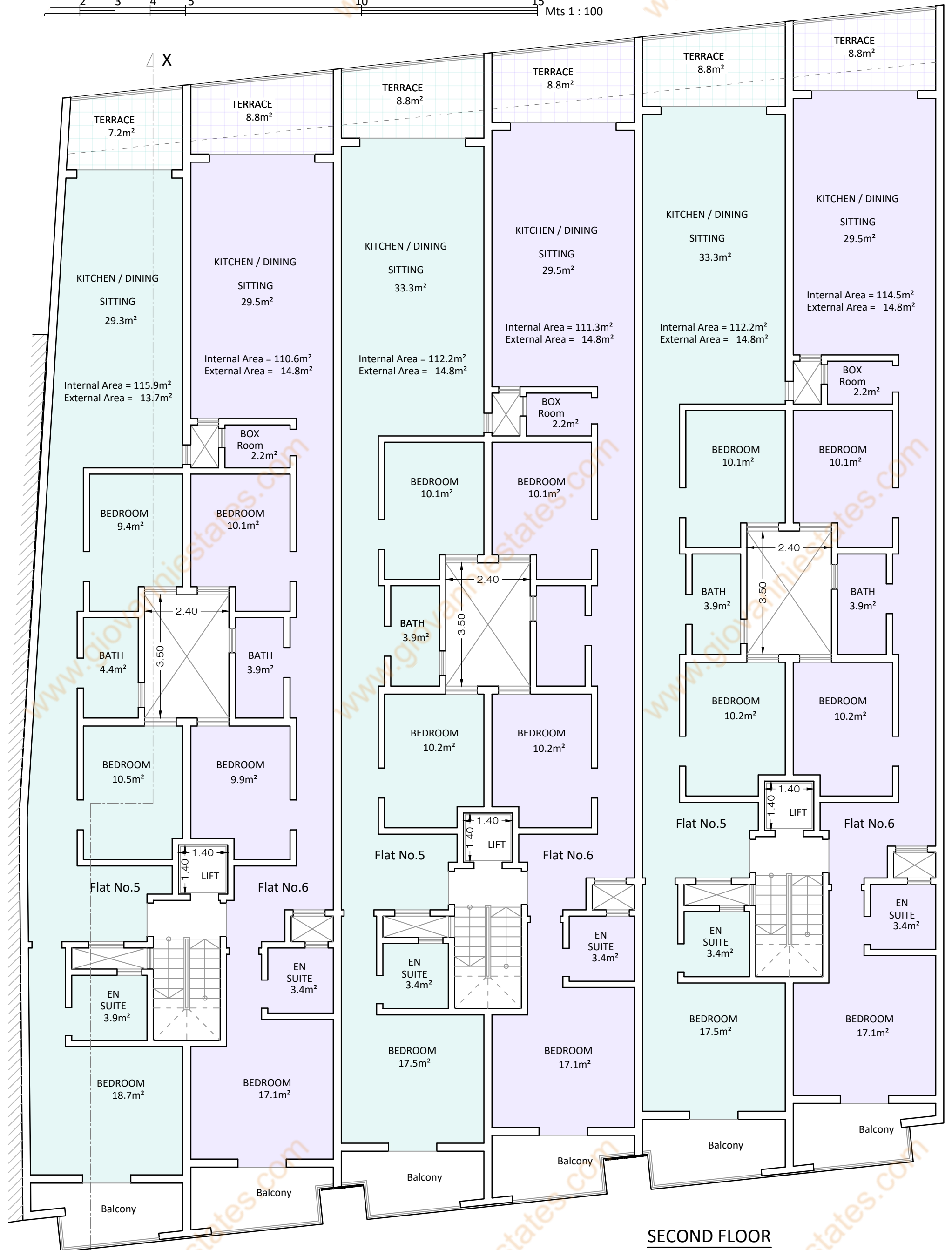




GROUND FLOOR  
Scale 1:100

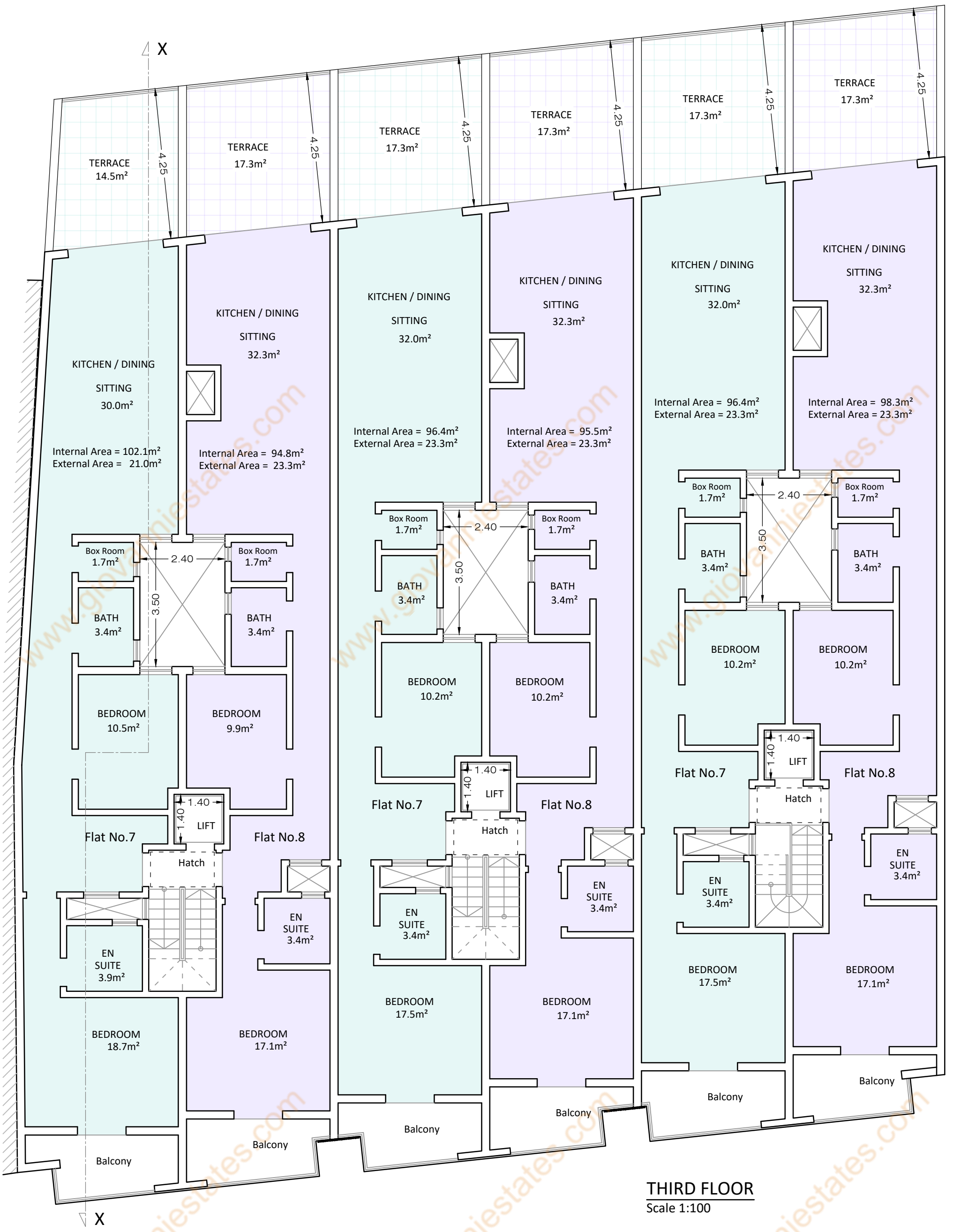


**FIRST FLOOR**  
Scale 1:100



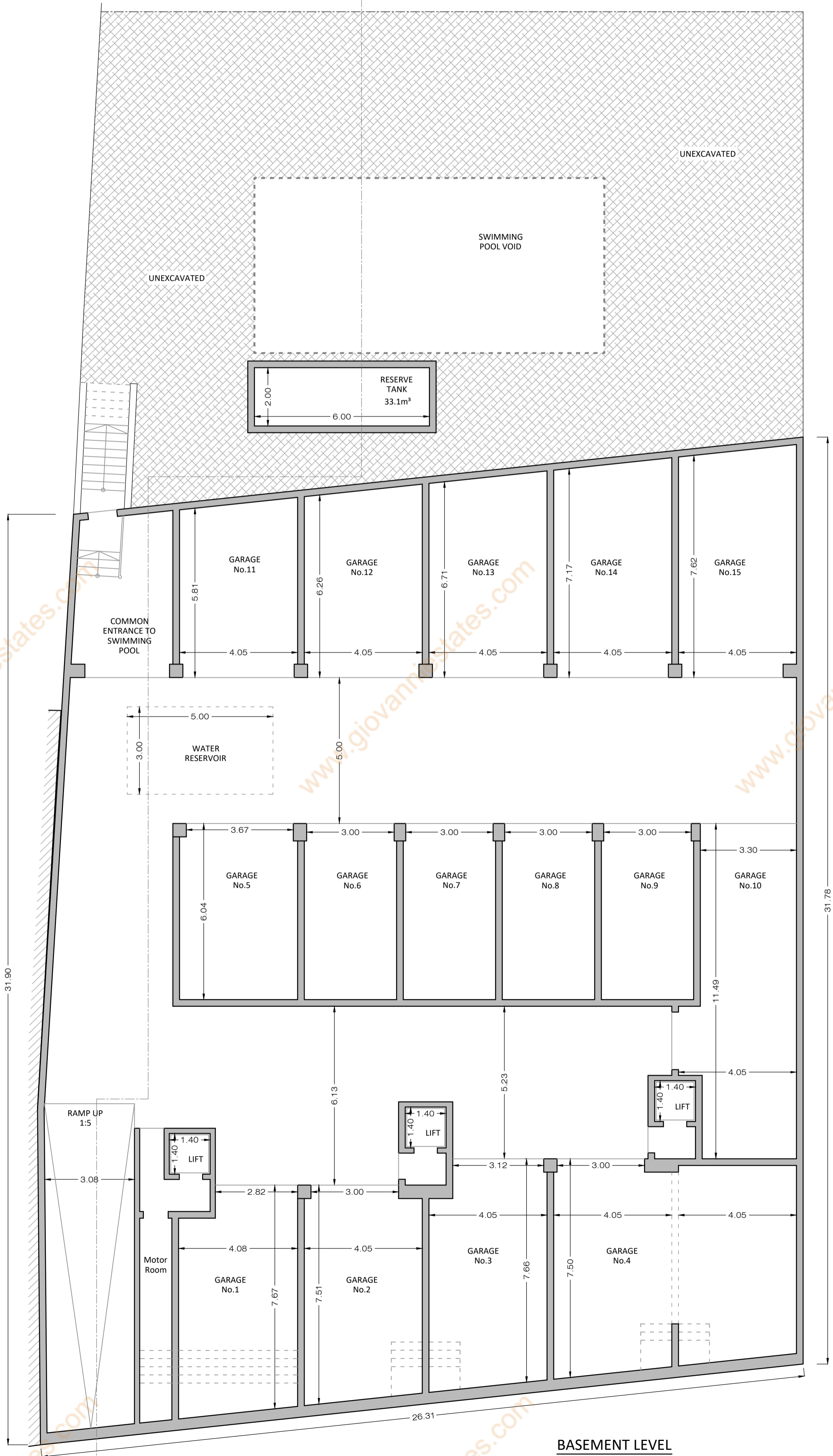
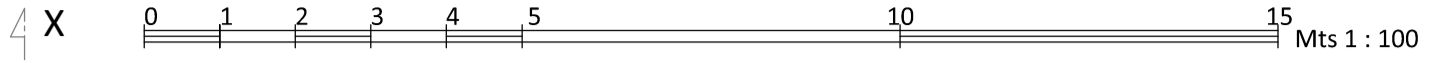
**SECOND FLOOR**  
Scale 1:100

0 1 2 3 4 5 10 15 Mts 1 : 100

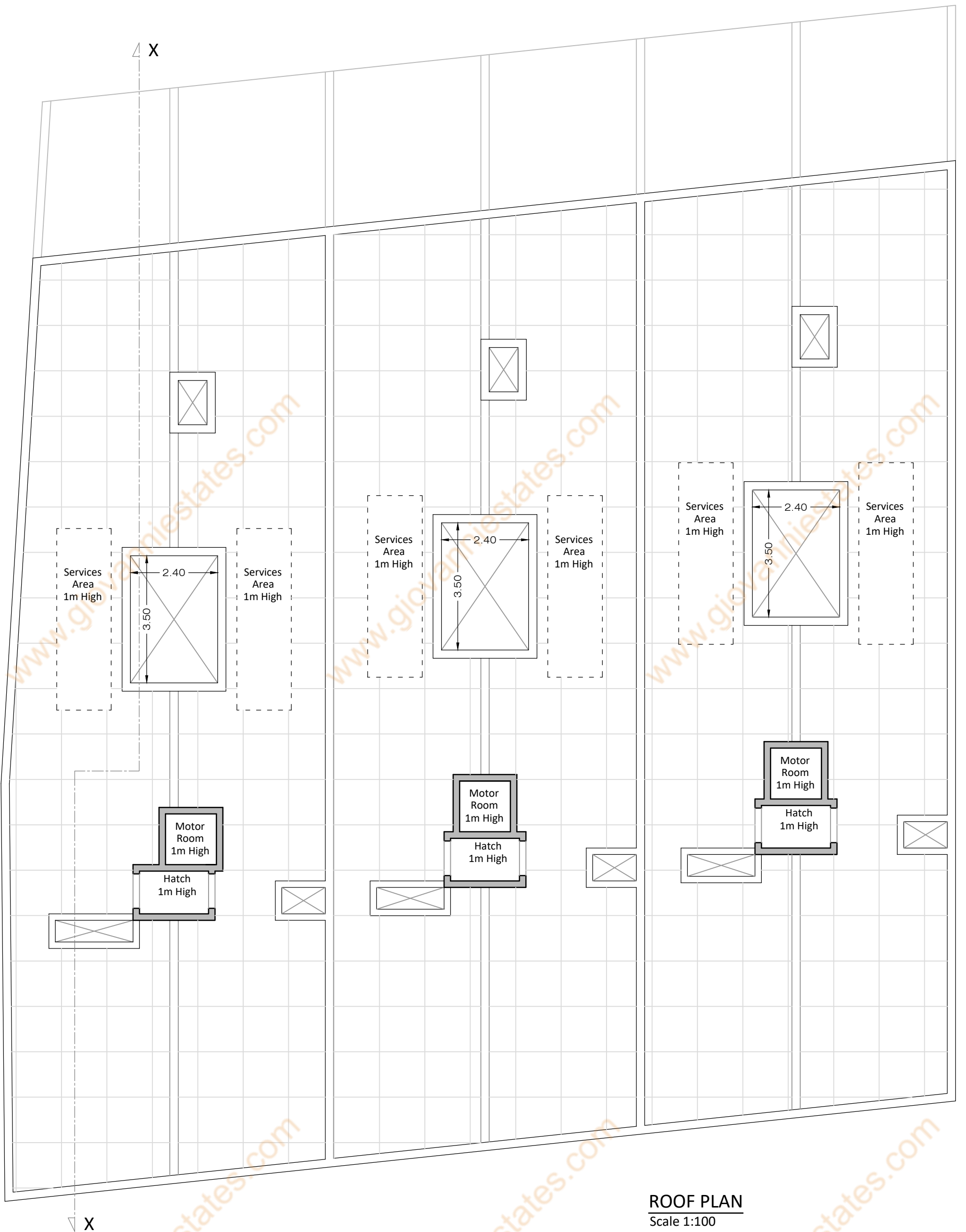
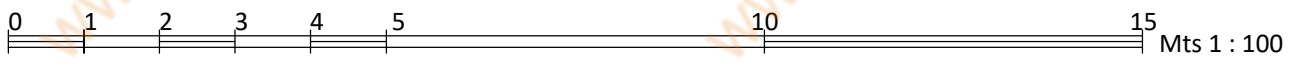


THIRD FLOOR  
Scale 1:100

SITE AREA:- 1211.8m<sup>2</sup>



**BASEMENT LEVEL**  
Scale 1:100



**ROOF PLAN**  
Scale 1:100

FACADE :LOCAL STONE UNPAINTED & UN RENDERED, AND LIGHT AND DARK PLASTER, AND TIMBER ELEMENTS  
APERTURES :WHITE ALUMINIUM  
GARAGE DOOR :WHITE POLYURETHANE UP & OVER  
BALCONY RAILING :WHITE ALUMINIUM



FRONT ELEVATION  
Scale 1:50

# Prices

LEVEL	BLOCK A		BLOCK B		BLOCK C	
<b>Penthouse Level</b>	7 2 Bedroom € 260,000 <i>(including airspace)</i> internal area: 102.1m <sup>2</sup> external area: 21.0m <sup>2</sup>	8 2 Bedroom <b>ON HOLD</b> <i>(including airspace)</i> internal area: 94.8m <sup>2</sup> external area: 23.3m <sup>2</sup>	7 2 Bedroom € 260,000 <i>(including airspace)</i> internal area: 96.4m <sup>2</sup> external area: 23.3m <sup>2</sup>	8 2 Bedroom <b>ON HOLD</b> <i>(including airspace)</i> internal area: 95.5m <sup>2</sup> external area: 23.3m <sup>2</sup>	7 2 Bedroom € 260,000 <i>(including airspace)</i> internal area: 96.4m <sup>2</sup> external area: 23.3m <sup>2</sup>	8 2 Bedroom <b>ON HOLD</b> <i>(including airspace)</i> internal area: 98.3m <sup>2</sup> external area: 23.3m <sup>2</sup>
<b>Second Floor Level</b>	5 3 Bedroom € 205,000 internal area: 115.9m <sup>2</sup> external area: 13.7m <sup>2</sup>	6 3 Bedroom € 205,000 internal area: 110.6m <sup>2</sup> external area: 14.8m <sup>2</sup>	5 3 Bedroom <b>ON HOLD</b> internal area: 112.2m <sup>2</sup> external area: 14.8m <sup>2</sup>	6 3 Bedroom € 205,000 internal area: 111.3m <sup>2</sup> external area: 14.8m <sup>2</sup>	5 3 Bedroom € 205,000 internal area: 112.2m <sup>2</sup> external area: 14.8m <sup>2</sup>	6 3 Bedroom € 205,000 internal area: 114.5m <sup>2</sup> external area: 14.8m <sup>2</sup>
<b>First Floor Level</b>	3 3 Bedroom € 195,000 internal area: 115.9m <sup>2</sup> external area: 13.7m <sup>2</sup>	4 3 Bedroom € 195,000 internal area: 110.6m <sup>2</sup> external area: 14.8m <sup>2</sup>	3 3 Bedroom € 195,000 internal area: 112.2m <sup>2</sup> external area: 14.8m <sup>2</sup>	4 3 Bedroom € 195,000 internal area: 111.3m <sup>2</sup> external area: 14.8m <sup>2</sup>	3 3 Bedroom € 195,000 internal area: 112.2m <sup>2</sup> external area: 14.8m <sup>2</sup>	4 3 Bedroom € 195,000 internal area: 114.5m <sup>2</sup> external area: 14.8m <sup>2</sup>
<b>Ground Floor Level</b>	1 2 Bedroom € 170,000 internal area: 102.0m <sup>2</sup> external area: 11.4m <sup>2</sup>	2 2 Bedroom € 175,000 internal area: 100.0m <sup>2</sup> external area: 13.0m <sup>2</sup>	1 3 Bedroom € 190,000 internal area: 110.8m <sup>2</sup> external area: 13.0m <sup>2</sup>	2 3 Bedroom € 190,000 internal area: 110.0m <sup>2</sup> external area: 13.0m <sup>2</sup>	1 3 Bedroom € 190,000 internal area: 110.8m <sup>2</sup> external area: 13.0m <sup>2</sup>	2 3 Bedroom € 190,000 internal area: 113.3m <sup>2</sup> external area: 13.0m <sup>2</sup>

Prices are for apartments in shell form

Common Parts: €15,000



# Prices

Garage 1 €30,000	Garage 2 €30,000	Garage 3 €30,000	Garage 4 €45,000	Garage 5 ON HOLD
Garage 6 €28,000	Garage 7 €28,000	Garage 8 €28,000	Garage 9 €28,000	Garage 10 €45,000
Garage 11 €35,000	Garage 12 €35,000	Garage 13 €35,000	Garage 14 €35,000	Garage 15 €35,000